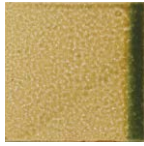
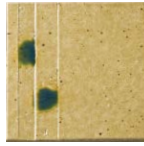


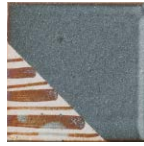
TSN-100/OR-02 ※
(織部)



TSN-100/KO-01 ※
(黄瀬戸織部)



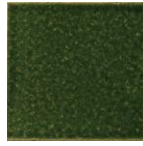
TSN-100/KS-02 ※
(黄瀬戸)



TSN-100/SN-01 ※
(ねずみ志野)



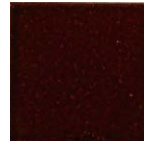
TSN-100/KB-01
(粉引き)



TSN-100/OF-01
(OF グリーン濃)



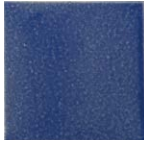
TSN-100/OF-02
(OF グリーン淡)



TSN-100/OF-03
(OF 紺)



TSN-100/OF-04
(OF 黄)



TSN-100/OF-05
(OF 瑠璃)



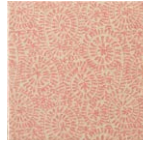
TSN-100/DR-01
(ドロップ 白)



TSN-100/DR-02
(ドロップ 黒)



TSN-100/TK-01
(瑠璃唐草)



TSN-100/TK-02
(桜唐草)



TSN-100/126A
(四季友禅 赤)



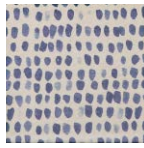
TSN-100/127A
(四季友禅 黒)



TSN-100/134A
(藍三角紋)



TSN-100/135A
(藍市松ちらし)



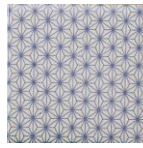
TSN-100/136A
(藍ドット)



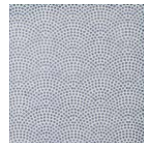
TSN-100/137A
(藍モザイク)



TSN-100/147A
(かのこ)



TSN-100/148A
(麻の葉)



TSN-100/149A
(小紋青海波)



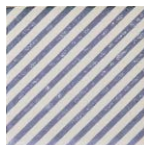
TSN-100/152A
(かご)



TSN-100/153A
(点描青海波)



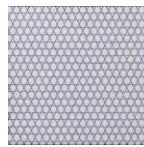
TSN-100/154A
(七宝つなぎ)



TSN-100/157A
(帯)



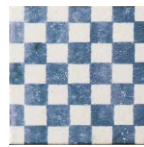
TSN-100/158A
(鱗紋)



TSN-100/159A
(籠目)



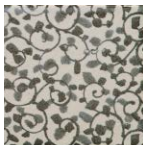
TSN-100/160A
(矢がすり)



TSN-100/161A
(江戸市松紋)



TSN-100/115A
(うずしお)



TSN-100/002A
(手描唐草)



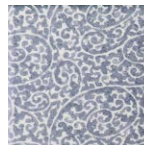
TSN-100/007A
(うず唐草)



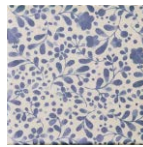
TSN-100/008A
(青海波)



TSN-100/145A
(全面唐草)



TSN-100/146A
(古染唐草)



TSN-100/138A
(藍フラワー)



TSN-100/068A
(大正小紋)



TSN-100/114A
(江戸唐草)



TSN-100/012A
(小春 グリーン)



TSN-100/036A
(桜染め 赤)



TSN-100/037A
(桜染め 青)



TSN-100/047A
(なでしこ ヒフ)



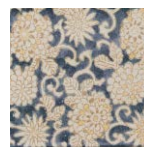
TSN-100/048A
(なでしこ 青)



TSN-100/142A
(色唐草 赤)



TSN-100/143A
(色唐草 茶)



TSN-100/144A
(色唐草 青)



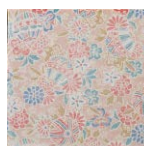
TSN-100/076A
(華友禅 赤)



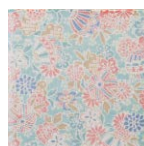
TSN-100/150A
(花むら 赤)



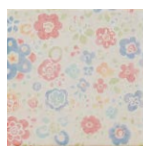
TSN-100/151A
(花むら 青)



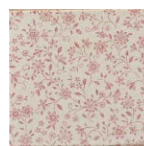
TSN-100/155A
(京雅 ピンク)



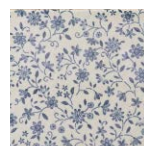
TSN-100/156A
(京雅 水色)



TSN-100/011A
(トロピカル)



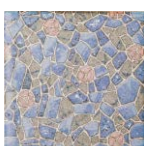
TSN-100/034A
(スイートフラワー
マロン)



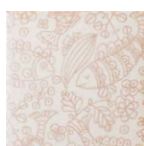
TSN-100/035A
(スイートフラワー 青)



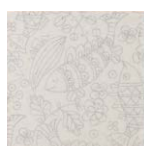
TSN-100/090A
(ペイズリー 青)



TSN-100/094A
(スタンド 青)



TSN-100/140A
(アトランティコ 茶)



TSN-100/141A
(アトランティコ 藤ねず)