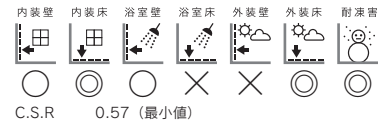


Juracotta

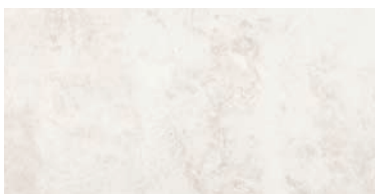
ジュラコッタ



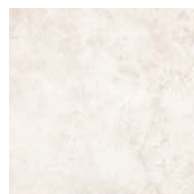
B I類 (磁器質) 施釉
made in Japan ●標準品



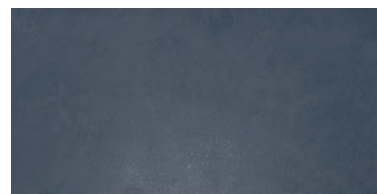
| | |
|----------------|-----------------------|
| 300 × 600 角平 | CY-630/JU- |
| | 594 × 294mm |
| | - |
| | 9.0mm厚 |
| | 5.75 枚/m ² |
| | 7 枚 / 箱 |
| | 25kg / 箱 |
| | ¥9,400/m ² |
| 300 角平 | CY-300/JU- |
| | 294 × 294mm |
| | - |
| | 9.0mm厚 |
| | 11.5 枚/m ² |
| | 14 枚 / 箱 |
| | 23kg / 箱 |
| | ¥4,900/m ² |
| 300 角階段 (3本溝) | - |
| | 294 × 294mm |
| | 9.0mm厚 |
| | 3.5 枚/m ² |
| | 14 枚 / 箱 |
| | 23kg / 箱 |
| | ¥5,800/m ² |
| 300 角階段罫 (3本溝) | 294 × 294mm |
| | - |
| | 9.0mm厚 |
| | - |
| | - |
| | - |
| | ¥2,700 / 枚 |



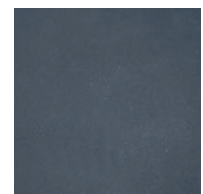
CY-630/JU-1



CY-300/JU-1



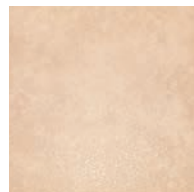
CY-630/JU-2



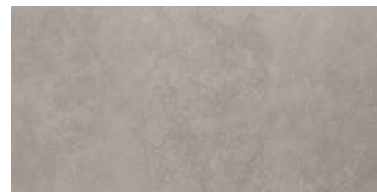
CY-300/JU-2



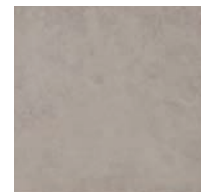
CY-630/JU-3



CY-300/JU-3



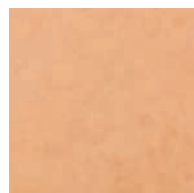
CY-630/JU-4



CY-300/JU-4



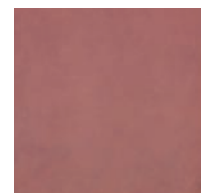
CY-630/JU-5



CY-300/JU-5



CY-630/JU-6



CY-300/JU-6