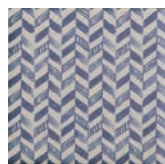


TSN-100/136A  
(藍ドット)



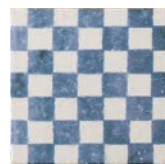
TSN-100/134A  
(藍三角紋)



TSN-100/137A  
(藍モザイク)



TSN-100/135A  
(藍市松ちらし)



TSN-100/161A  
(江戸市松紋)



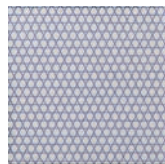
TSN-100/157A  
(帯)



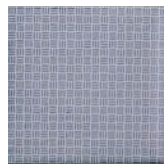
TSN-100/147A  
(かごこ)



TSN-100/154A  
(七宝つなぎ)



TSN-100/159A  
(鰐目)



TSN-100/152A  
(かご)



TSN-100/158A  
(鱗紋)



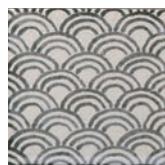
TSN-100/160A  
(矢がすり)



TSN-100/149A  
(小紋青海波)



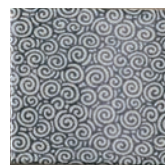
TSN-100/153A  
(点描青海波)



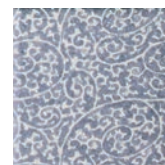
TSN-100/008A  
(青海波)



TSN-100/114A  
(江戸唐草)



TSN-100/007A  
(うず唐草)



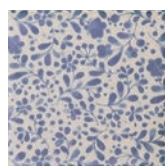
TSN-100/146A  
(古染唐草)



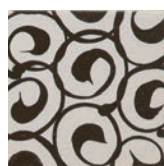
TSN-100/148A  
(麻の葉)



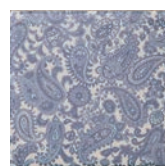
TSN-100/002A  
(手描唐草)



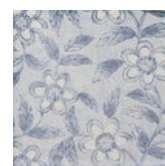
TSN-100/138A  
(藍フラワー)



TSN-100/115A  
(うずしお)



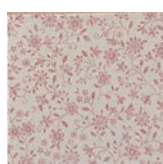
TSN-100/090A  
(ペイズリー 青)



TSN-100/145A  
(全面唐草)



TSN-100/035A  
(スイートフラワー 青)



TSN-100/034A  
(スイートフラワー マロン)



TSN-100/151A  
(花むら 青)



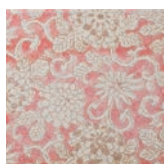
TSN-100/150A  
(花むら 赤)



TSN-100/037A  
(桜染め 青)



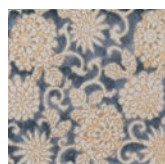
TSN-100/036A  
(桜染め 赤)



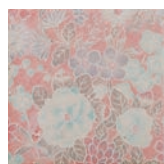
TSN-100/142A  
(色唐草 赤)



TSN-100/143A  
(色唐草 茶)



TSN-100/144A  
(色唐草 青)



TSN-100/076A  
(華友禅 赤)



TSN-100/155A  
(京雅 ピンク)



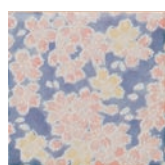
TSN-100/156A  
(京雅 水色)



TSN-100/042A  
(小春 グリーン)



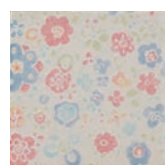
TSN-100/047A  
(なでしこ ヒワ)



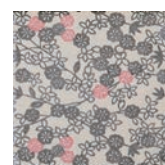
TSN-100/048A  
(なでしこ 青)



TSN-100/094A  
(ステンド 青)



TSN-100/011A  
(トロピカル)



TSN-100/068A  
(大正小紋)